

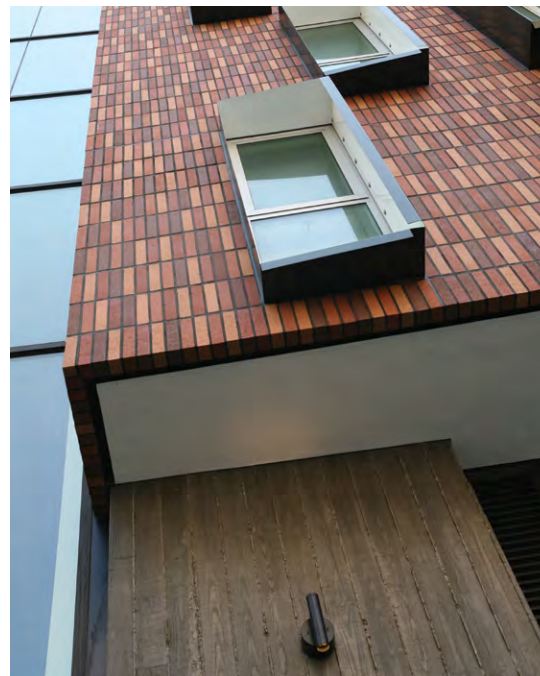


70 YEARS
EST. 1953

PACIFIC COAST
building products, inc.

Building on 70 Years of Excellence





A message from our President



Our companies' origins go back to 1953, when my grandfather, Fred Anderson, opened the doors to Anderson Lumber Company in Sacramento, California.

He had no way to envision his fledgling lumber yard would grow and expand to become a leader in the building materials industry. While the business has grown exponentially, one thing has remained the same: we are still a family-owned company with the same set of high standards implemented by Fred all those years ago.

We are proud of our companies' successes and realize that it's our people who have made it all possible. Without their hard work, imagination and sheer grit we would not be the companies we are today. We also realize that it's our customers, some of whom have been with us since the beginning, that are the true testament to how well we do.

Much has changed over the years, but some things remain the same. We remain a family-owned business that continues to stay true to the same high standards established by Fred so long ago and carried on by my father Dave Lucchetti before me. "Give the customer what they want, and a little bit more." Our mission is to provide outstanding customer service, quality products at the right price and foster strong relationships with our customers.

Our companies' 'house' logo was designed years ago with the sides not touching. The slight separations signify that our companies are never complete, but always evolving, open to new products, innovations, and ideas. Those beliefs were important factors in building our businesses and remain critical to our companies' future successes. Thank you for being part of our ongoing story.

Sincerely,
Ryan Lucchetti
President/CEO

70 YEARS
EST. 1953



HEY! 

ANDERSON LUMBER CO.
OPENS TOMORROW
✓ Check These Opening Specials

2x4 DF S4S and 2x4 STUDS **\$39^M**
Number four lumber at its very best. Northern stock at the price of California culls.

1x4 and 1x6 S4S **\$42^M**
Redwood or Fir
Take your choice. Long lasting redwood or Oregon fir at prices that really please.

V-RUSTICS GALORE
1x6 and 1x8 Redwood \$88 up
4 Grades To Choose From
1x6 and 1x8 \$145 up
Kiln Dried Fir...

KILN DRY FLOORING
Hurry—This Won't Last
1x4 E Grade Extra long—Extra good **\$75^M**
1x4 Vert. Grain—Long Bell Stock—**\$140^M**

PREFITS
Complete Window Units Ready To Install
LOWEST PRICES GET OUR QUOTE

SHEETROCK
½ 4x8 and ½ 4x12 **\$52.50^M**
Also ½ 2x8 Exterior Sheathing

See Our Quality Stock of Ponderosa Pine Mouldings

FINANCING AVAILABLE ON HOME IMPROVEMENTS

 **ANDERSON** Lumber Company
65th & S
HU 6-6863

Sacramento Bee February 17, 1953

1953

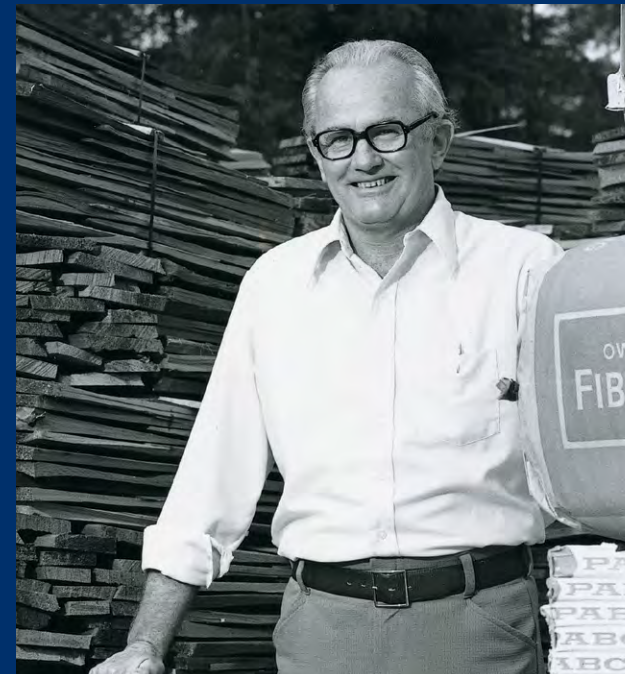
An idea was born

Fred Anderson had spent several years working in his father-in-law's lumberyard when he hatched the idea of going out on his own.

He saw opportunity for growth and loved a challenge. To finance this venture, Fred and his wife, Pat, sold their car and used all their belongings as collateral. They leased some property, bought a lumber truck and inventory. In 1953, Fred and Pat opened Anderson Lumber in Sacramento, CA. Fred's philosophy was, "Listen to what your customers want and deliver a little bit more." This has served our company well from inception to present day.

What began as a small lumber yard has grown into a multifaceted manufacturing, contracting and distribution business that has become a leader in the building materials industry. Founded on a shoestring, with determination, vision and optimism, Anderson Lumber was only the first of many businesses that Fred Anderson opened or acquired to better serve his customers.

By 1978, son-in-law Dave Lucchetti took over as company president and continued the expansion of the business. With Dave at the helm, the company culture maintained its emphasis on valuing relationships, treating employees, customers, vendors, and the community as friends.



Sustainable Practices

Our companies, much like the rest of the world, are continually exploring how we can best conserve our natural resources. Each subsidiary develops their own sustainable practices that address energy efficiency, water conservation recycling, waste reduction and decreasing environmental impact.



Community Engagement

From the earliest days of the company, Fred and Pat Anderson were deeply involved in the community and helping the less fortunate.

Dave Lucchetti followed that same spirit, as does Ryan Lucchetti, who is a role model as he contributes time and resources to various children's causes and other charitable organizations. Dave's example and support of employee community involvement is incentive for others in PCBP's family of companies to become involved in their local community philanthropies.

In 1999, The Pacific Coast Charitable Foundation was established to focus on charities in communities the companies serve, with an emphasis on children in need. That same year, the Pacific Coast Scholarship Foundation was established for children and grandchildren of current and retired employees to help defray the ever-increasing cost of higher education.

Adopt-A-Family is a company-wide community outreach initiative, run by employees to support their local communities. Throughout the year, each location raises money through creative endeavors such as Penny Wars, snack sales and arts and craft sales. Every December, Adopt-A-Family purchases and delivers clothing and toys to children in need in the very same communities that we operate our businesses in.



Corporate Structure





Basalite® Building Products, LLC

Basalite Building Products, has become one of the largest and most respected manufacturers of building materials in the Western United States and Canada.

Our offerings include products made of concrete, clay, plastics and natural stone and have been used on projects from the Apple Park in Cupertino, CA, to the historical restoration of The Plaza Hotel in New York City to DIY backyards.

We pride ourselves on having the most knowledgeable and service-oriented sales teams in the industry. Our mission is to supply the highest quality construction materials while providing outstanding service to our customers. We offer AIA certified seminars focusing on application, specifications and design of our products. We encourage contractors, engineers, architects and planners to tour our facilities to better understand the process of manufacturing our products.

Basalite® Concrete Products and Air Vol Block

Structural Concrete Masonry Units – CMU combines both versatility and strength with low maintenance, fire-resistance and thermal properties, making it an affordable, energy conscious solution. We have one of the largest selections of shapes, sizes, textures and colors, allowing designers to create innovative, durable and attractive designs.

Engineered Products – the engineered products group includes segmental retaining walls, permeable pavers, fence walls and articulating concrete block mats (ACBM). Our permeable pavement systems, designed to reduce storm water runoff and contaminants, are eco-friendly and offer efficient mechanical installation.

Hardscapes – “Great Hardscapes Start Here” with interlocking paving stones, garden walls and stepping stones. Durable, low-maintenance and beautiful, they are perfect for anyone looking for a backyard patio, walkway, pathway, pool deck or driveway.

Packaged Concrete – We supply a network of distributors and contractors with high quality packaged concrete products sold under the Basalite® and Sakrete® brands. Our packaged concrete line includes concrete mixes, mortars, fast setting patches and many more repair products. basalite.com, basalite.ca & airvolblock.com

Classic Stone

Classic Stone has been the premier manufacturer of decorative rock, stepping stones and landscape edging for over 25 years. Based in Phoenix, AZ, Classic offers a wide variety of high quality product lines to large retail chains and local distributors throughout the Southwest. classicstonemfg.com

Epic Plastics

Since its inception Epic Plastics has converted over 144 million shampoo and milk bottles and other post-consumer plastics into landscape edging products for nearly 30 years. Our 100% recycled plastic Benda Board® is not only environmentally friendly, it's a durable, preferred alternative to steel and traditional wood edging. epicplastics.com

Gladding, McBean

Established in 1875, Gladding, McBean is renowned for terra cotta façades, clay sewer pipe, ornamental pottery, roofing, floor tiles, and chimney tops and caps. Our terra cotta products are visible on some of the country's well-known landmarks, such as the Flat Iron building in New York City and Stanford University's iconic red roof tiles. The plant combines old world craftsmanship with today's technology such as laser scanning and computer-aided designs, providing customers with an infinite supply of creative possibilities for architectural terra cotta projects. gladdingmcbean.com

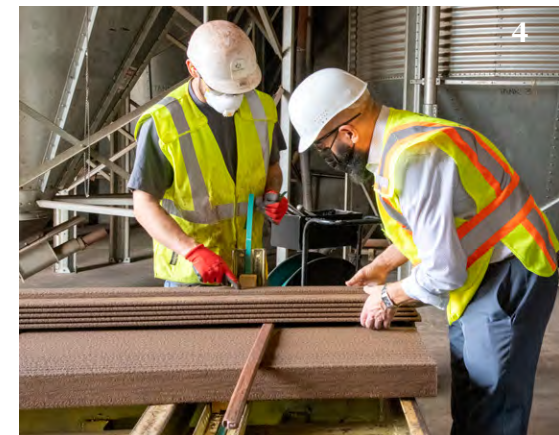
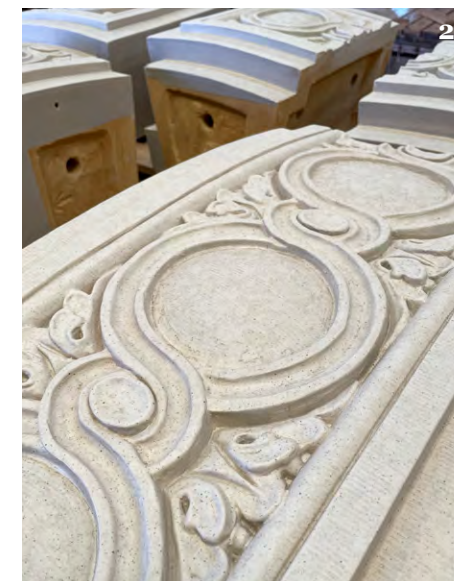
H.C. Muddox

For more than 140 years, H.C. Muddox has provided the highest quality clay products throughout the western U.S., including standard face thin brick, flue liners, pavers, pool coping and structural brick. Architects and designers select our products because of the unique custom shapes, sizes and colors we provide with locally sourced clay. hcmuddox.com

Interstate® Brick

With more sizes, more shapes, more possibilities, Interstate Brick is recognized as a premier brick manufacturer in North America. With unique shapes and sizes combined with over 60 color blends, it is easy to see why architects and builders choose Interstate products for their residential and commercial projects. interstatebrick.com

Photos: far left – Basalite Concrete Products, 1. Basalite Concrete Products, 2. Gladding McBean, 3. Classic Stone, 4. Epic Plastics, 5. Interstate brick, 6. Basalite Concrete Products

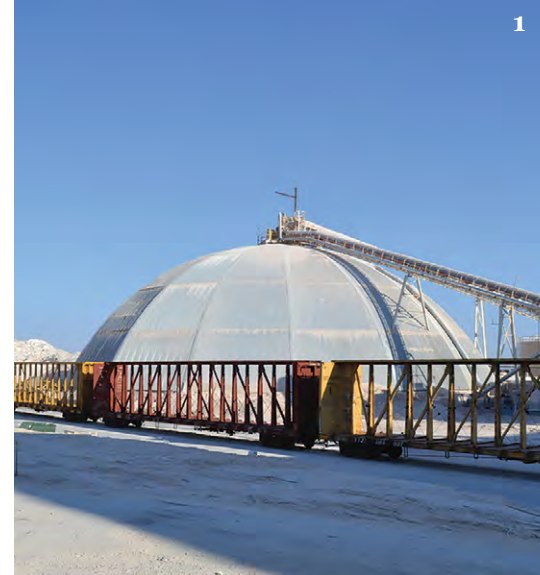




PABCO® Building Products, LLC

At PABCO® Building Products we manufacture three distinct, seemingly unrelated products: asphalt roofing shingles, gypsum wallboard and paper products, that dovetail at the job-site.

Our companies are known throughout the building industry for superior and innovative products with an emphasis on sustainability and customer support. We strive to improve our customers' quality of life while preserving the environment.



PABCO® Gypsum

PABCO Gypsum manufactures a broad range of gypsum panels for residential and commercial applications across North America. When you work with us, you can expect high-quality drywall, attentive service, and reliable technical advice from our industry experts.

QuietRock®

In 2013, PABCO Gypsum acquired QuietRock, the first and most technically advanced sound reducing drywall in the industry. These products achieve high sound attenuation and fire-resistance in one panel using less space, material and



labor than conventional alternatives. QuietRock reduces noise transmission by using proprietary layer damping technology. The results are less audible energy passing through the board; reducing the noise level transmitting through the wall. This family of products is used in commercial and residential projects where sound control is a primary concern. Whether you need to mitigate sound, fire, mold or moisture, we have the wallboard that your job demands.

pabcogypsum.com

PABCO® Roofing Products

We manufacture premium asphalt PABCO roofing shingles in the beautiful Pacific Northwest. Our Tacoma, WA location has manufactured roofing shingles since 1984. Our mission is to offer the products and capabilities of a national manufacturer, the care and service of a small business, and a fierce commitment to building relationships. Our company tagline says it all, "Exceptional People. Remarkable Products®." We offer our clients a full range of premium products with the



personalized service of a trusted local business, so that our customers experience the best of both worlds. Our team of exceptional people makes it their priority every day to provide remarkable products, service, and support.

pabcoroofing.com

PABCO® Paper

PABCO Paper produces high-quality industrial paper products to serve the building and packaging industries. We manufacture a variety of products including gypsum liners, miscellaneous chip, and specialty papers for packaging products from pastries to concrete and brick. Our gypsum liners are used in wallboard products by PABCO Gypsum and include cream face, gray back, mold resistant and other specialty products. Chip products include plain, bending, laminating and partition chips. Protecting and preserving the environment is a core value of PABCO Paper. Recognizing these values, we use 100% recycled pre and post-consumer waste to make wallboard lining and specialty papers. pabcopaper.com

Photos: far left – PABCO Roofing products, 1. PABCO Gypsum plant, 2. PABCO Gypsum, 3. PABCO Gypsum, 4. PABCO Roofing products, 5. PABCO Paper



Alcal Specialty Contracting, Inc
 Alcal Specialty Contracting is a large commercial and residential specialty contractor that has operated since 1971. Our installed products include roofing, waterproofing, insulation, firestop, air barrier applications, as well as garage doors for both commercial and residential construction.
alcal.com

Photos: far left – Insulation 1. Roofing, 2. Roofing, 3. Firestop, 4. Overhead Doors, 5. Roofing & Waterproofing, 6. Insulation, 7. Roofing



Pacific Coast Building Services, Inc.

Pacific Coast Building Services (PCBS) operates a group of subsidiaries and joint ventures performing specialty contracting services throughout the western United States. We refer to them collectively as our Contracting Family of Companies.

Customers can trust us to safely complete their projects on time with the highest level of quality. Our experienced and skilled workforce ensures we can handle an extensive array of construction projects across commercial, industrial, and residential sectors. Whether it's a custom home, multi-family apartment, office building, school, hospital or entertainment venue, our dedicated team will ensure the job is done right.

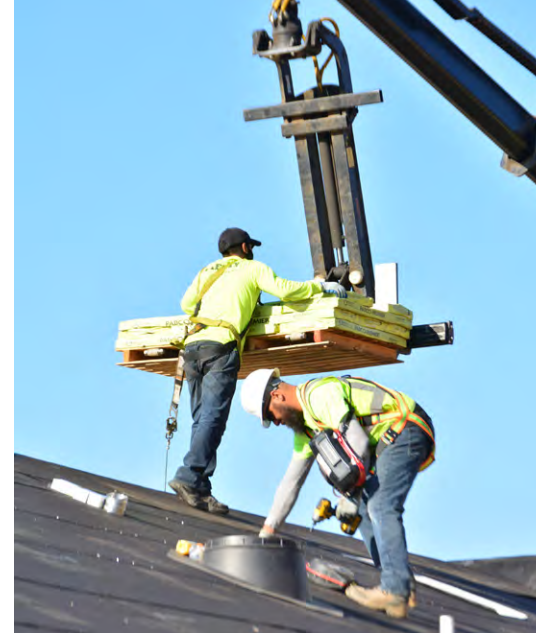




Pacific Coast Supply, LLC

Pacific Coast Supply, LLC operates a group of building products distribution companies throughout the western United States.

Our companies operate on a set of core values that include Safety, Accountability, Relationships and Development. Our reputation for outstanding service is built on these values and all the great people throughout our company that share them.



Pacific Supply®

We supply residential and commercial roofing, drywall, insulation, stucco, waterproofing, manufactured stone and accessory products to a diverse subcontractor base. Our 36 locations in 9 states and fleet of over 500 pieces of delivery and material handling equipment stands ready to meet the demands of our diverse subcontractor base.
paccostsupply.com

Anderson Lumber

Anderson Lumber was established in 1953 as the original Pacific Coast Building Products' business and has a customer

base of primarily subcontractors who service the production and multifamily builder. The majority of our products are broken down into framing packages that consist of lumber, sheathing, engineered wood products and siding. By using state-of-the-art technology to precut house packages, we help expedite fast and precise installation.
andersonlumber.com

Pioneer Builders Supply

Pioneer supplies commercial and residential roofing and waterproofing to the Puget Sound and Spokane areas of Washington State. We pride ourselves on our knowledgeable, helpful and experienced staff of sales and delivery personnel. In business since 1960, we are widely regarded as the premier roofing distributor in the area.
pioneer-rooftop.com

Diamond Pacific

Our three California locations in Grass Valley, Auburn and Placerville provide contractors and subcontractors with a full range of building products including

lumber, siding, hardware, decking, wallboard, roofing and masonry.
diamondpacificsupply.com

Hawaii Supply

Located in Kapolei, HI, we service contractors and owners with a well-stocked inventory of roofing, waterproofing and insulation products for both residential and commercial projects. Popular brands combined with technical expertise and delivery ability sets Hawaii Supply apart. **hawaiiroofingsupplies.com**

P.C. Wholesale

As the lumber products "buying arm" for all Pacific Coast Supply locations, P.C. Wholesale is able to leverage the scale of the company to provide competitive costs for our locations and assist, with mill-direct shipments of lumber and sheet goods to high volume projects.

Reno Carson Lumber

Committed to delivering premium lumber at competitive prices, our experienced team manages everything from estimates to deliveries. With the region's largest yard in Northern Nevada and the Eastern Sierras, we ensure ample materials for every project.
renocarsonlumber.com

Photos: far left – Anderson Lumber, 1. Pacific Supply, 2. Pacific Supply, 3. Diamond Pacific, 4. Pacific Supply, 5. Anderson Lumber



Pacific Coast Transportation Services, Inc.

For over 60 years, Material Transport, Inc. (MT) has been providing excellent, safe and reliable service to businesses requiring flatbed transportation of their goods. Throughout the Western U.S, we are committed to efficiently and safely transporting your products.

Our experienced and friendly dispatchers will take charge of your freight needs. Our expert staff works with you to transport your products efficiently, safely and on time. We run late model, reliable and CARB compliant equipment. Loads are monitored using electronic logs, enhancing safety and enabling location tracking. Upon delivery, you can rely on proof of delivery and accurate billing.

Our History

Founded in 1961 with a single truck, Material Transport, Inc. now operates more than 50 power units and a variety of trailers designed to move products efficiently from one location to another. Our territory ranges from Texas to British Columbia and all the states in between. In May of 2021, Material Transport Trucking and Storage was born putting MT in the material handling and logistics business, located in Fort Worth, TX.

Safe, Efficient and Timely Freight Delivery

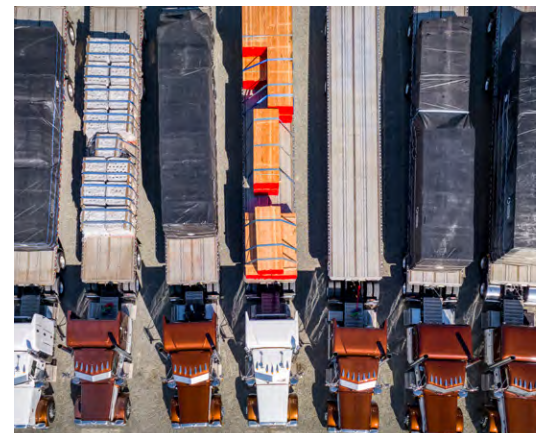
We understand the importance of safe, efficient and timely freight delivery, with minimal interruptions when our drivers are on the road. We are continually investing in new trucks that are equipped with the latest emission reducing technology, phasing out less efficient vehicles. We maintain one of the most environmentally sensitive and reliable fleets in the industry. MT proactively became completely California CARB Compliant and is a member of the EPA's Smartway program. We are committed to running newer models that minimize truck downtime,

resulting in delays. Additional benefits of late model equipment are enhanced safety, reduced environmental concerns, fuel efficiency and better driver retention.

Our Fleet

Our Over The Road (OTR) fleet is comprised exclusively of late model Peterbilt and Kenworth trucks. Newest additions to the fleet are long hood 389's and W-9's, and 48' Reitnouer trailers. These join the fleet of Peterbilt 567's and Kenworth T-880's, with 45' Reitnouer and Western trailers. Designed to be compliant to California's length limited roads, these trucks regularly make trips to coastal and mountain routes in northern California. We also have several day cabs that are equipped with 42' and 45' trailers for job-site and lightweight needs.

efficiencies in nearly every aspect of our business. We added SAP Transportation management software in July 2021. This is a best in class, industry state of the art software that helps MT leverage the freight market. Our focus on safety has been enhanced with the implementation of GPS. We follow optimal routes, monitor driver safety and inspection reports daily. Driver inspection and engine fault code reports are received electronically and enable us to address issues before they become expensive repairs. Driver score cards rate the safety and performance of our drivers. Loads are monitored every step of the way, beginning with load time and ending with delivery. **materialtransport.com**
mttruckingandstorage.com





Pacific Coast Jet Charter, Inc.

In 1978, Pacific Coast Jet Charter, Inc. (Pacific Jet Charter/PJC) was established as the business aviation department for PCBP.

Available for hire internally and externally, our new Cessna Citation XLS+ jet enables our customers to utilize their time more efficiently and meet their goals more effectively, on their schedule. Our personal service guarantees our passengers absolute comfort and safety. Pacific Jet Charter, Inc. provides flights throughout the continental United States, Alaska, Mexico, Canada and the Caribbean. Passengers enjoy a comfortable, private, on-demand travel experience. PJC's Gold ARG/US safety rating and luxurious interior allow passengers to relax and enjoy the journey, whether traveling for business or pleasure.

pacificjet.com



Pacific Coast Companies, Inc.

Pacific Coast Companies, Inc. is a dedicated team of professionals that provide a range of business services and support to the PCBP family of companies and their customers. Our services include accounting and internal audit, environmental consulting and risk management, human resources and payroll, information technology, marketing and advertising, legal services, finance, tax and treasury management.



PCBP Properties, Inc.

PCBP Properties, Inc. invests in and manages numerous properties throughout the western United States. Many of its property holdings are leased to sister companies within Pacific Coast Building Products, Inc. and its family of companies. Others are leased to third parties or held for investment purposes.

1953

Anderson Lumber established by Fred Anderson



1961

Material Transport established



1970

Pacific Supply® acquired



Arcade Insulation established

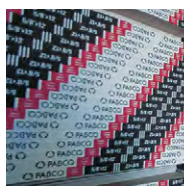


1976

Gladding, Bean (est. 1875) acquired



PABCO® Gypsum acquired



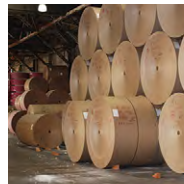
1979

Basalite® Block brand established



1984

PABCO® Paper acquired



PABCO® Roofing plants in CA & WA acquired



1993

Annual Adopt-A Family program established at all PCBP locations



1998

Fred Anderson (posthumously) & Dave Lucchetti inducted into CBIA Hall of Fame



2003

Pacific Coast Building Products celebrated its 50th year



PCBP created 8 independently operating subsidiaries

2008

Anderson Lucchetti Women's and Children's Center ground breaking



2017

Classic Stone acquired



2021

Dave Lucchetti appointed Chairman of the PCBP Board, Ryan Lucchetti appointed President & CEO



Building on 70 Years of Excellence

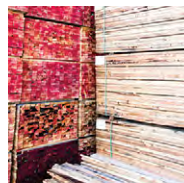
1960

Drywall Supply acquired



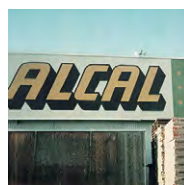
1965

Pacific Coast Wood Products, Inc. acquired



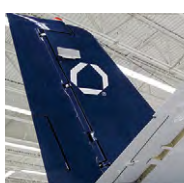
1971

Alcal® acquired



1978

Pacific Jet Charter established

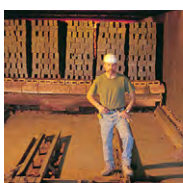


Fred Anderson retires, Dave Lucchetti elected President & COO



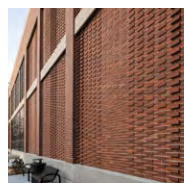
1980

H.C. Muddox (est. 1878) acquired



1990

Interstate® Brick (est. 1891) acquired



Diamond Pacific established



1994

PCBP recognized by Forbes as one of the top 500 privately owned companies



1999

PCBP Foundation established to benefit children in need



2006

Epic Plastics acquired



2013

QuietRock® acquired



Pioneer Builders Supply acquired



2023

PCBP celebrates 70 years in business



BASALITE® BUILDING PRODUCTS

2150 Douglas Boulevard. Suite 260
Roseville, CA 95661
(916) 740-4510

Basalite® Concrete Products

California

605 Industrial Way
Dixon, CA 95620
(800) 776-6690

1201 Golden State Boulevard
Selma, CA 93662
(559) 896-0753

11888 West Linne Road
Tracy, CA 95376
(209) 833-3670

Colorado

3255 Drennan Road
Colorado Springs, CO 80910
(719) 390-5477

5170 Kalamath Street
Denver, CO 80221
(303) 783-3864

1801 S. Rollie Avenue
Fort Lupton, CO 80621
(303) 292-2345

Idaho

1300 East Franklin Road
Meridian, ID 83642
(800) 596-3844

Nevada

2600 Boeing Way
Carson City, NV 89706
(775) 882-9336

Pine Nut Road
Dayton, NV 89403
(775) 690-8022

355 Greg Street
Sparks, NV 89431
(800) 800-1151

Oregon

1945 S. 1st Street
Redmond, OR 97756
(541) 548-5910

Washington

3299 International Place
DuPont, WA 98327
(800) 964-3424

British Columbia, Canada

8650 130th Street
Surrey, BC V3W 1G1
(800) 596-3844

Alberta, Canada

233183 Range Road 283
Rocky View County, AB T1X0J9
(800) 596-2844

Air-Vol Block (JV)

1 Suburban Road
San Luis Obispo, CA 93401
(805) 543-1314

Classic Stone

4902 West Superior Avenue
Phoenix, AZ 85043
(602) 484-0827

Epic Plastics

104 East Turner Road
Lodi, CA 95240
(209) 333-6161

Gladding, McBean

601 7th Street
Lincoln, CA 95648
(916) 645-3341

H.C. Muddox

4875 Bradshaw Road
Sacramento, CA 95827
(916) 859-6320

Interstate® Brick

2652 Commerce Way
Ogden, UT 84401
(801) 621-4207

9780 South 5200 West
West Jordan, UT 84088
(801) 280-5200

PABCO® BUILDING PRODUCTS, LLC

10811 International Drive
Rancho Cordova, CA 95670
(916) 631-6021

PABCO® Gypsum

California

4301 Firestone Boulevard
South Gate, CA 90280
(323) 826-6960

37851 Cherry Street
Newark, CA 94560
(510) 792-9555

Nevada

8000 East Lake Mead Boulevard
Las Vegas, NV 89124
(800) 634-6601

Washington

1476 Thorne Road
Tacoma, WA 98421
(877) 449-7786

QuietRock®

37851 Cherry Street
Newark, CA 94560
(800) 797-8159

PABCO® Paper

4460 Pacific Boulevard
Vernon, CA 90058
(323) 581-6113

PABCO® Roofing Products

1476 Thorne Road
Tacoma, WA 98421
(253) 272-0374

PACIFIC COAST BUILDING SERVICES, INC.

946 North Market Boulevard
Sacramento, CA 95834
(916) 286-5700

Alcal® Specialty Contracting, LLC

Arizona

1246 E Broadway Road
Phoenix, AZ 85040
(480) 606-1500

California

42950 Osgood Road
Fremont, CA 94539
(510) 477-9380

2647 North Weber Avenue
Fresno, CA 93705
(559) 233-1274

6205 Engle Way Suite K
Gilroy, CA 95020
(408) 665-4750

4201 Sierra Point Dr., Suite 101
Sacramento, CA 95834
(916) 929-3100

879 North Wright Road
Santa Rosa, CA 95407
(707) 544-4270

4587-89 Firestone Boulevard
South Gate, CA 90280
(323) 923-3420

3965 North Wilcox Road, Suite B
Stockton, CA 95215
(209) 931-6815

Colorado

5952 North Broadway
Denver, CO 80216
(719) 888-1018

Hawaii

91-446 Komohana Street
Bldg. B, Units A, B & C
Kapolei, HI 96707
(808) 682-5222

Nevada

3555 West Oquendo Road
Las Vegas, NV 89118
(702) 382-8457

650 Spice Island Drive
Sparks, NV 89431
(775) 356-9112

Oregon

5835 NE 122nd Avenue, Ste 165
Portland, OR 97230
P: (760) 410-4782

Washington

8531 S. 222nd Street
Kent, WA 98031
(253) 796-1314

Gold Label Specialties, LLC (JV)

1440 El Paso Blvd.
Denver, CO 80221
(303) 279-7234

Spilker Pacific, LLC (JV)

Nevada

3555 West Oquendo Road
Las Vegas, NV 89118
(702) 525-8505

Washington

3730 E Trent Avenue, Suite 2
Spokane, WA 99202
(509) 724-6720

Fireside Home Solutions (JV)

Oregon

18389 SW Boones Ferry Road
Portland, OR 97224
(503) 684-3545

Washington

13200 NE 20th Street, Suite 100
Bellevue, WA 98005
(425) 747-3473

4798 Auburn Way N, Suite 105
Auburn, WA 98002
425-251-9447

North Bay Pacific Insulators, LLC (JV)

2777 Cleveland Ave
Santa Rosa, CA 95403
(707) 526-2277

RSH Pacific, LLC (JV)

73-4272 Hulikoa Drive, #D
Kailua-Kona, HI 96740
(808) 325-2822

PACIFIC COAST SUPPLY, LLC

4290 Roseville Road
North Highlands, CA 95660
(916) 971-2220

Anderson Lumber

4290 Roseville Road
North Highlands, CA 95660
(916) 481-2220

3505 Hicks Lane
Chico, CA 95973
(530) 228-6380

Diamond Pacific

11770 Atwood Road
Auburn, CA 95603
(530) 885-6291

124 East McKnight Way
Grass Valley, CA 95949
(530) 274-3000

150 Forni Road
Placerville, CA 95667
(530) 622-2680

Hawaii Supply, LLC

91-550 Awakumoku Street
Kapolei, HI 96707
(808) 841-5677

Pacific Supply

Arizona

4801 West Colter Street
Glendale, AZ 85301
(623) 842-1300

California

3505 Hicks Lane
Chico, CA 95973
(530) 895-0567

3630 Ritchie Road
Fairfield, CA 94533
(707) 253-7866

2647 North Weber Avenue
Fresno, CA 93705
(559) 264-2566

1155 North Emerald Avenue
Modesto, CA 95351
(209) 521-2467

5550 Roseville Road
North Highlands, CA 95660
(916) 339-8100

1735 24th Street
Oakland, CA 94607
(510) 832-5734

1400 Melody Road
Olivehurst, CA 95961
(530) 741-9926

3000 Mather Field Road
Rancho Cordova, CA 95670
(916) 368-3535

4310 Westside Road
Redding, CA 96001
(530) 246-1191

2070 South 7th Street, Bldg. G
San Jose, CA 95112
(408) 537-0590

61 Jordan Street
San Rafael, CA 94901
(415) 453-9531

879 North Wright Road
Santa Rosa, CA 95407
(707) 546-7317

1675 Mission Road
South San Francisco, CA 94080
(650) 756-1364

3965 North Wilcox Road
Stockton, CA 95215
(209) 931-1122

30158 Road 68
Visalia, CA 93291
(559) 651-2185

Colorado

1885 North Academy Boulevard
Colorado Springs, CO 80909
(719) 591-2010

500 West Wesley Avenue
Denver, CO 80223
(303) 722-3335

1012 NE Frontage Road
Fort Collins, CO 80524
970-493-9590

36 North Electronic Drive
Pueblo West, CO 81007
(719) 547-4252

Idaho

2202 Centurion Place
Boise, ID 83709
(208) 378-8510

3140 S Yellowstone Highway
Idaho Falls ID 83402
(986) 497-6350

1641 Highland Avenue East
Twin Falls, ID 83301
(208) 736-8899

Montana

724 Glider Lane
Belgrade, MT, 59714
(406) 388-4453

600 Daniel Street
Billings, MT 59101
(406) 254-8876

3454 US Hwy 2 W
Kalispell, MT 59901
(406) 453-1118

1701 Rankin Street
Missoula, MT 59808
(406) 317-0048

Nevada

1140 West Bonanza Road
Las Vegas, NV 89106
(702) 385-5905

650 Spice Island Drive
Sparks, NV 89431
(775) 284-9473

Oregon

3300 Crater Lake Avenue
Medford, OR 97504
(541) 772-7173

Texas

2115 Valley View Lane
Farmers Branch, TX 75234
(972) 620-9097

2550 US Highway 287
Mansfield, TX 76063
(817) 572-4100

Utah

531 North 600 West
Cedar City, UT 84720
(435) 586-6020

2875 South 300 West
Salt Lake City, UT 84115
(801) 484-6136

845 North Redrock Road
St. George, UT 84770
(435) 628-3618

Pioneer Builders Supply Co.

522 21st Street
Bremerton, WA 98312
(360) 373-7000

2427 South 260th Street
Kent, WA 98032
(253) 529-2299

312 West Jameson Street
Sedro-Woolley, WA 98284
(360) 814-1200

3730 E Trent Avenue
Spokane, WA 99202
(509) 926-5060

5401 South Burlington Way
Tacoma, WA 98409
(253) 474-6000

3060 37th Avenue SW
Tumwater, WA 98512
(360) 352-4000

PC Wholesale

4290 Roseville Road
North Highlands, CA 95660
(916) 971-2370

Reno Carson Lumber

680 Spice Islands Drive
Sparks, NV 89431
(775) 329-9663

3691 Arrowhead Drive
Carson City, NV 89706
(775) 515-1352

PACIFIC COAST JET CHARTER, INC.

Pacific Jet Charter

10811 International Drive
Rancho Cordova, CA 95670
(916) 631-6507

PACIFIC COAST COMPANIES, INC .

10811 International Drive
Rancho Cordova, CA 95670
(916) 631-6500

PACIFIC COAST TRANSPORTATION SERVICES, INC.

Material Transport, Inc.

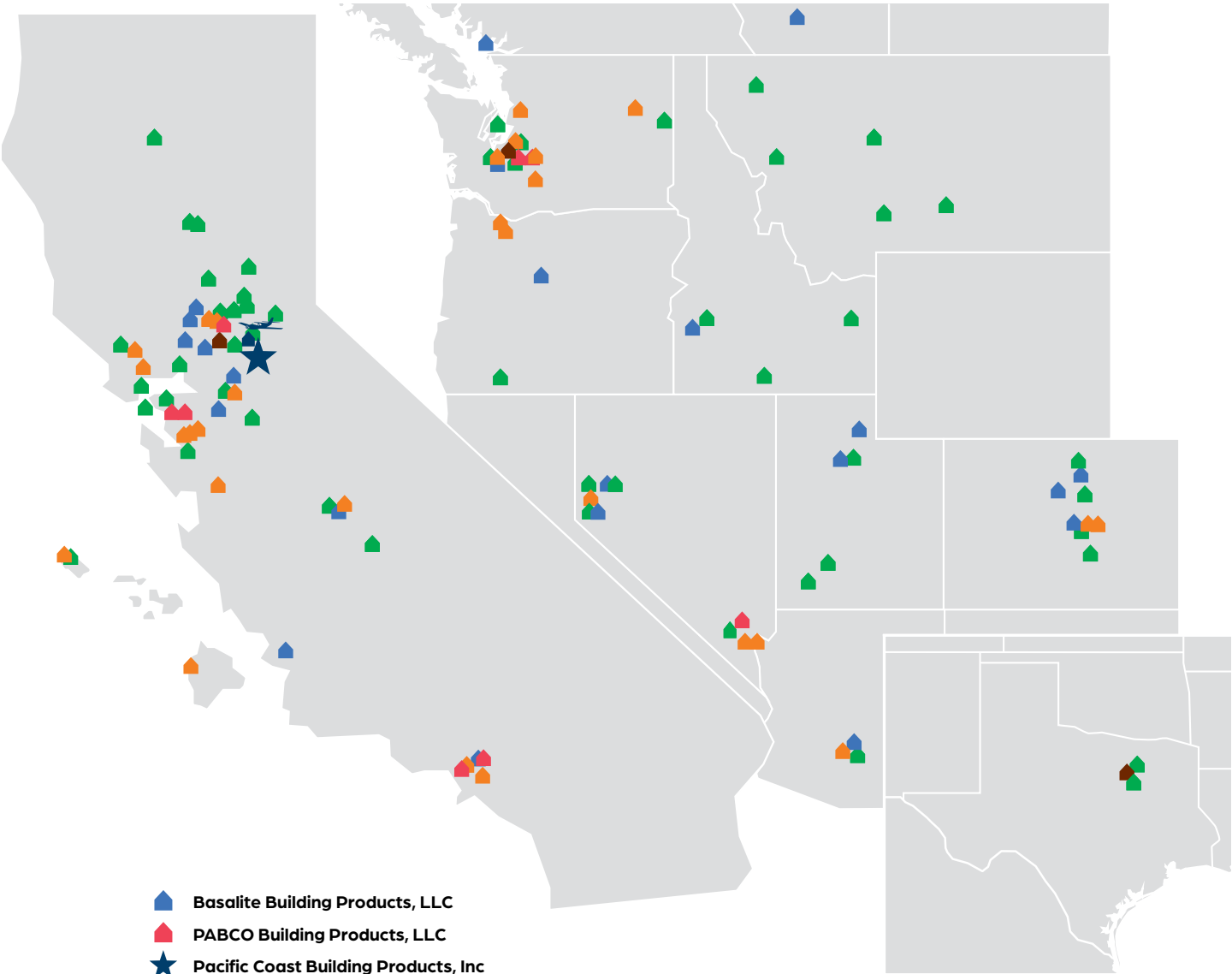
7500 San Joaquin Street
Sacramento, CA 95 820
(916) 266-5300

5401 South Burlington Way
Tacoma, WA 98409
(253) 284-1288

10354 Hicks Field Road
Fort Worth, TX 76179
(817) 232-4474

(JV) = Joint Venture

Company Locations Map



- Basalite Building Products, LLC
- PABCO Building Products, LLC
- Pacific Coast Building Products, Inc
- Pacific Coast Building Services, Inc.
- Pacific Coast Companies, Inc.
- Pacific Coast Supply, LLC
- Pacific Coast Transportation Services, Inc
- Pacific Jet Charter, Inc.



Building on 70 Years of Excellence

Quality Products, Exceptional Service Relationships

The story of Pacific Coast Building Products, inc. and its family of companies is a testament to the importance of honesty, fairness and a concern for the well-being of others in everyday relationships. Fred Anderson founded his company on three core values: quality products, exceptional service and relationships. We are as committed to those values today as we were in 1953.



10811 International Drive
Rancho Cordova CA 95670
paccoast.com

©2026 Pacific Coast Building Products, inc.
All trademarks ® are registered trademarks.
1/29/26

